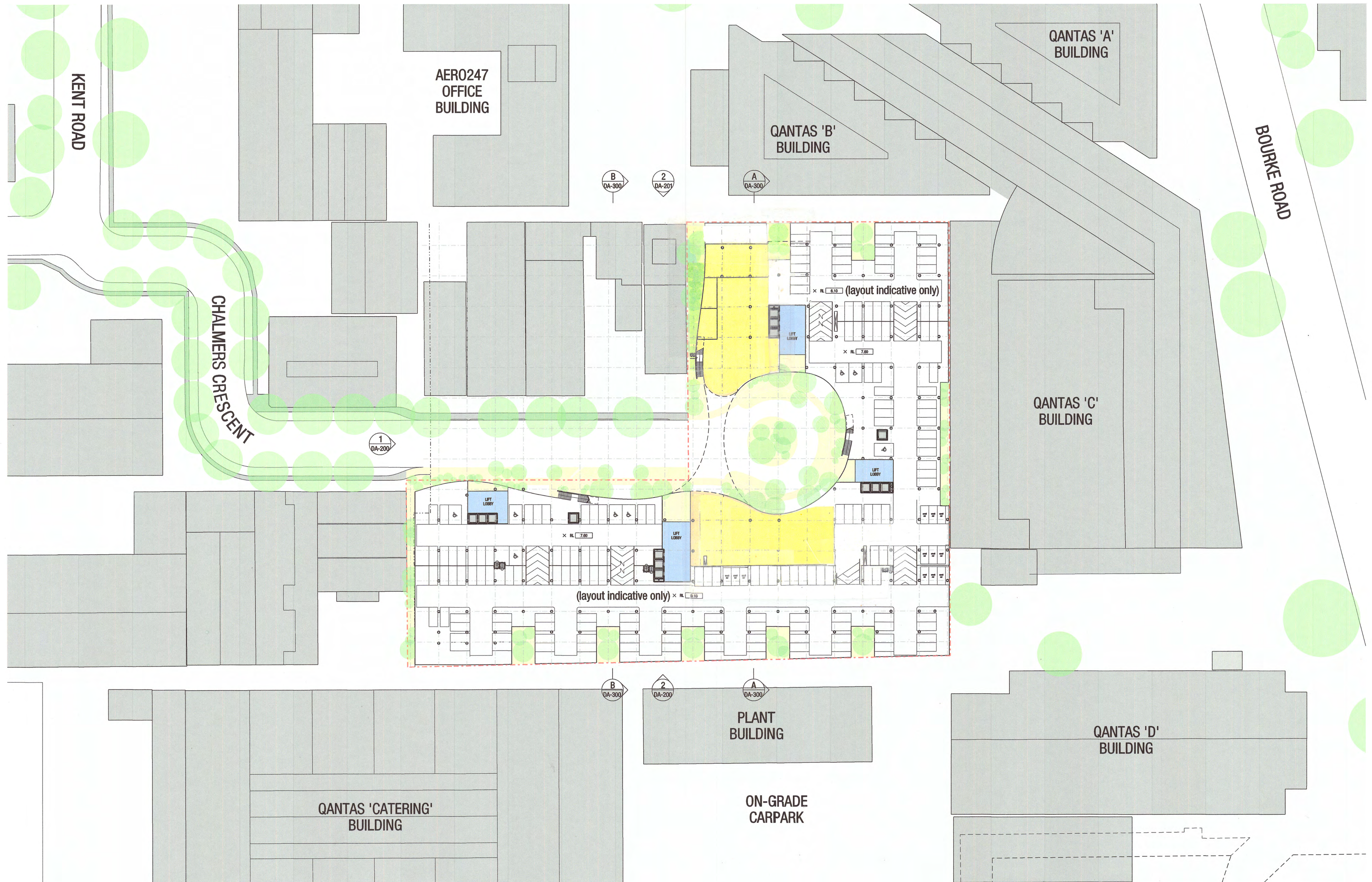
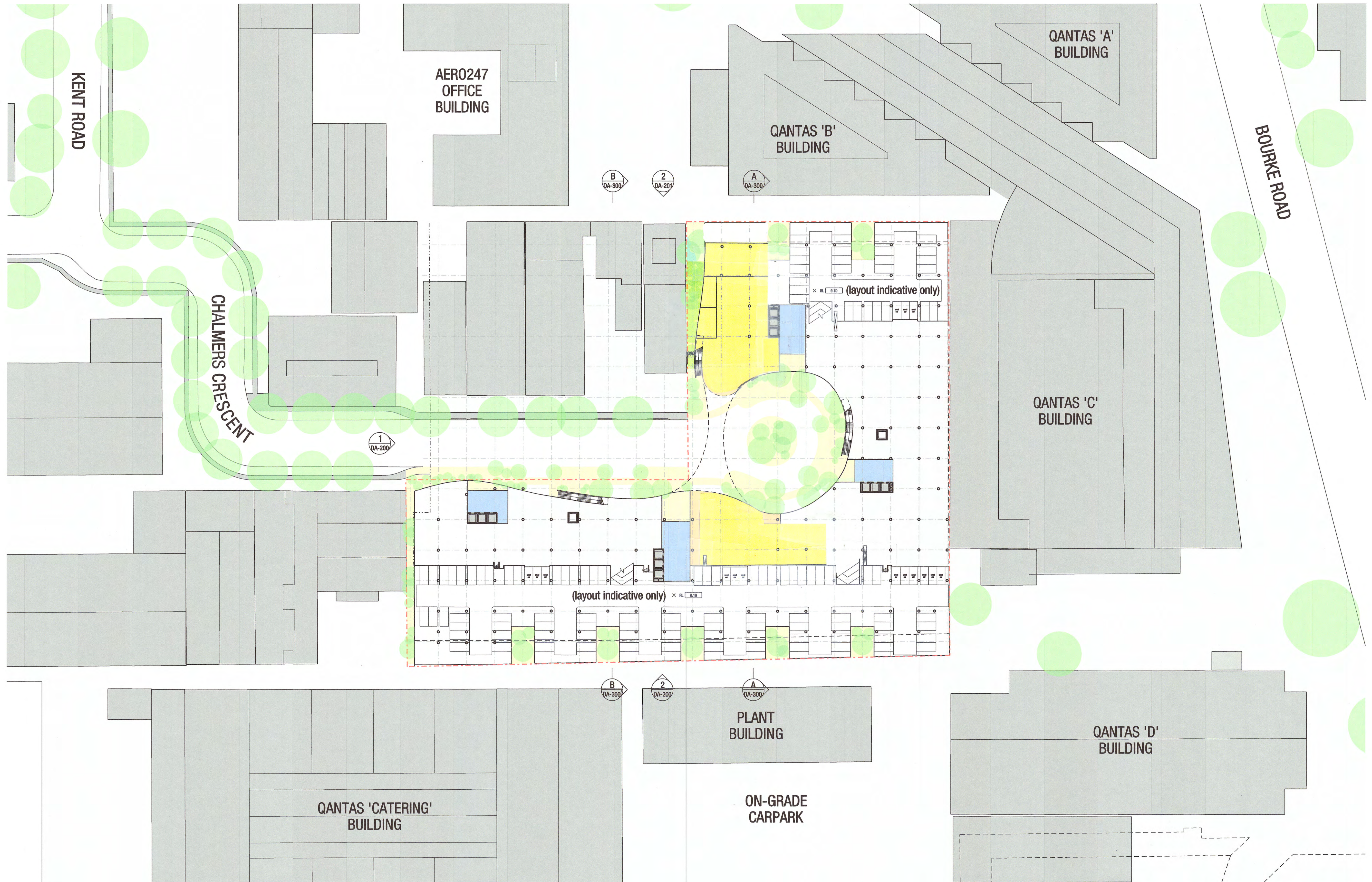


revision	date	description	by	verification	initial	signature	date	note	architect	project	drawing	scale	0	10	20	50m
F	23 MAR 2015	AMENDED MASTER PLAN DA	SW	checked by	BMD		02.04.15	Do not scale from drawings. All discrepancies to be brought to the attention of the Architect. This drawing is intellectual property and copyright of the author, and must not be retained, copied or used without the express authority of Conrad Gargett Riddel Anchor Mortlock Woolley Pty. Ltd.	CONRAD GARGETT RIDDEL ANCHOR MORTLOCK WOOLLEY	Suite C3.18, Level 3, 22-36 Mountain Street, Ultimo NSW 2007, Australia T + 61 2 9280 2445 F + 61 2 9280 2446 E info@conradgargettriddel.com.au Nominated Architects: Dale Swan, Cert. No. 3316, Phil Balgott Cert. No. 6174	COMMERCIAL MASTERPLAN DA 7-9, 14-18, & 19-21 CHALMERS CRESCENT, MASCOT	1:1000@A1, 1:2000@A3				
G	02 APR 2015	UPDATE	SW													
H	07 APR 2015	UPDATE	SW	approved by	DS		02.03.15		neustein urban planning and design	BALANCE CORPORATE PROPERTY	client F.Mayer (Imports) Pty Ltd on behalf of Mayer Properties Ltd, J Ingster, D&V Saya, H Glaser	drawn by SW	project no 1204	drawing no DA-010	revision K	
J	14 APR 2015	UPDATE	SW													
K	21 JUL 2015	AMENDED DA ISSUE	BMD													



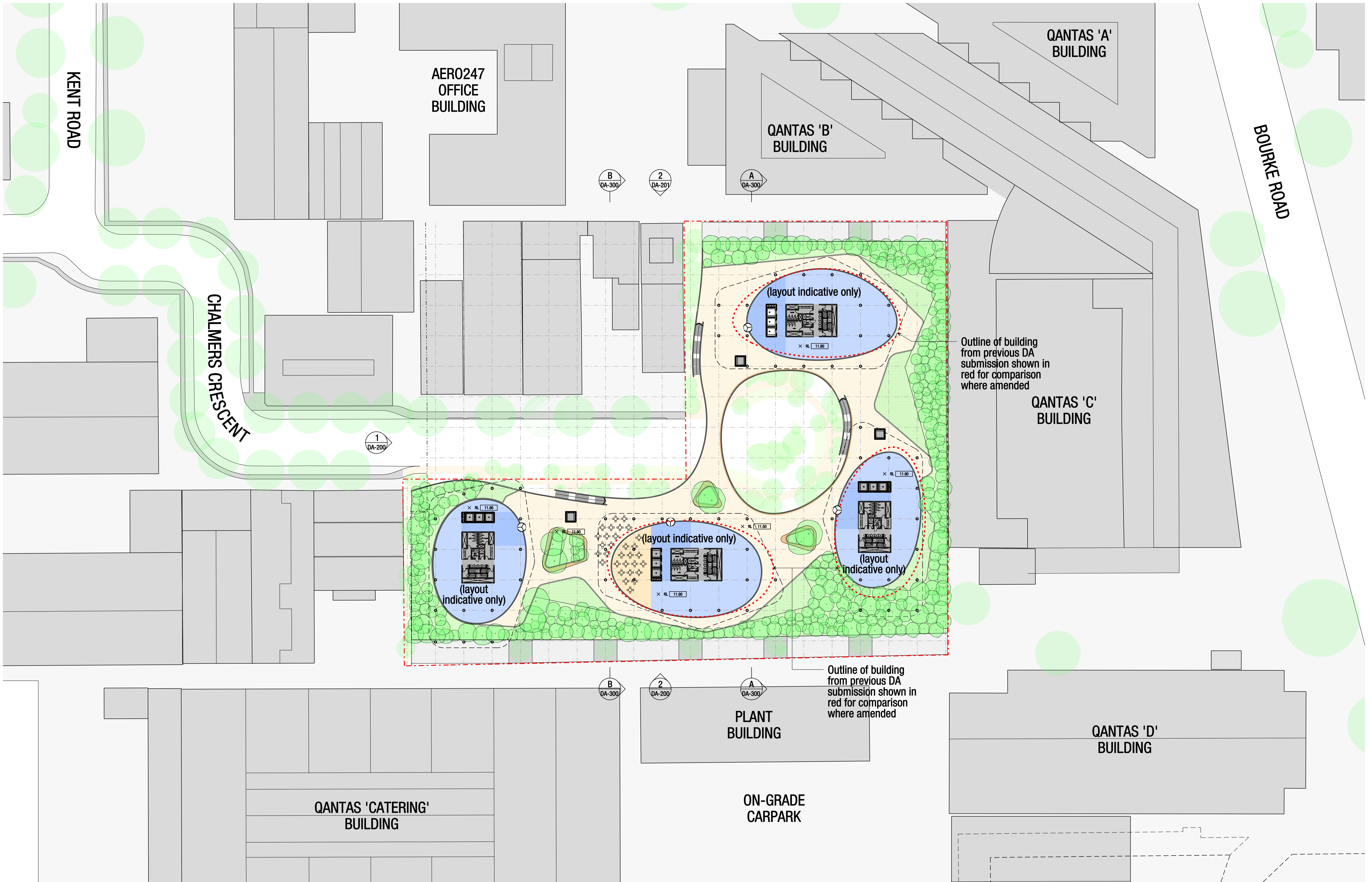
1 LEVEL 1 FLOOR PLAN - CARPARK
SCALE 1:1000 @ A3

revision L	date 08 SEP 2015	description DA ISSUE UPDATE	by BMD	verification checked by BMD	initial BMD	signature <i>Edie Smith</i>	date 02.04.15 02.03.15	role Do not scale from drawings. All discrepancies to be brought to the attention of the Architect. This drawing is intellectual property and copyright of the author, and must not be released, copied or used without the express authority of Conrad Gargett Hobart Ancher Mortlock Woolley Pty. Ltd.	architect CONRAD GARGETT RIDDEL	ANCHER MORTLOCK WOOLLEY	Suite G3.15, Level 3, 23-36 Mountain Street, Ulmo NSW 2007, Australia T + 61 2 9280 2445 F + 61 2 9280 2446 E service@conradgargett.com.au Nominated Architects: Dale Swan Cart No. 25716 The Designer: Cart No. 6174	REUSTEIN URBAN PLANNING AND DESIGN	BALANCE CORPORATE PROPERTY	project COMMERCIAL MASTERPLAN DA 7-8, 14-18, & 19-21 CHALMERS CRESCENT, MASCOT client F.Mayer (Imports) Pty Ltd on behalf of Mayer Properties Ltd, J Ingster, D&V Saya, H Glaser	drawing LEVEL 1 AND UPPER GROUND FLOOR PLAN - CARPARK	scale 1:5000@A1, 1:1000@A3 0 5 10 25m drawn by SW project no 1204 drawing no DA-101 revision L/A
---------------	---------------------	--------------------------------	-----------	-----------------------------------	----------------	--------------------------------	------------------------------	-------------------------------------------------------------------------------------------------------------------------------------------------------------------------------------------------------------------------------------------------------------------------------------------------------------	----------------------------------------------	-------------------------	--------------------------------------------------------------------------------------------------------------------------------------------------------------------------------------------------------------------------------	------------------------------------	----------------------------	----------------------------------------------------------------------------------------------------------------------------------------------------------------------------------------------------------------	-----------------------------------------------------------------	-----------------------------------------------------------------------------------------------------------------------------------------------------



1 LEVEL 1a FLOOR PLAN - CARPARK
SCALE 1:1000 @ A3

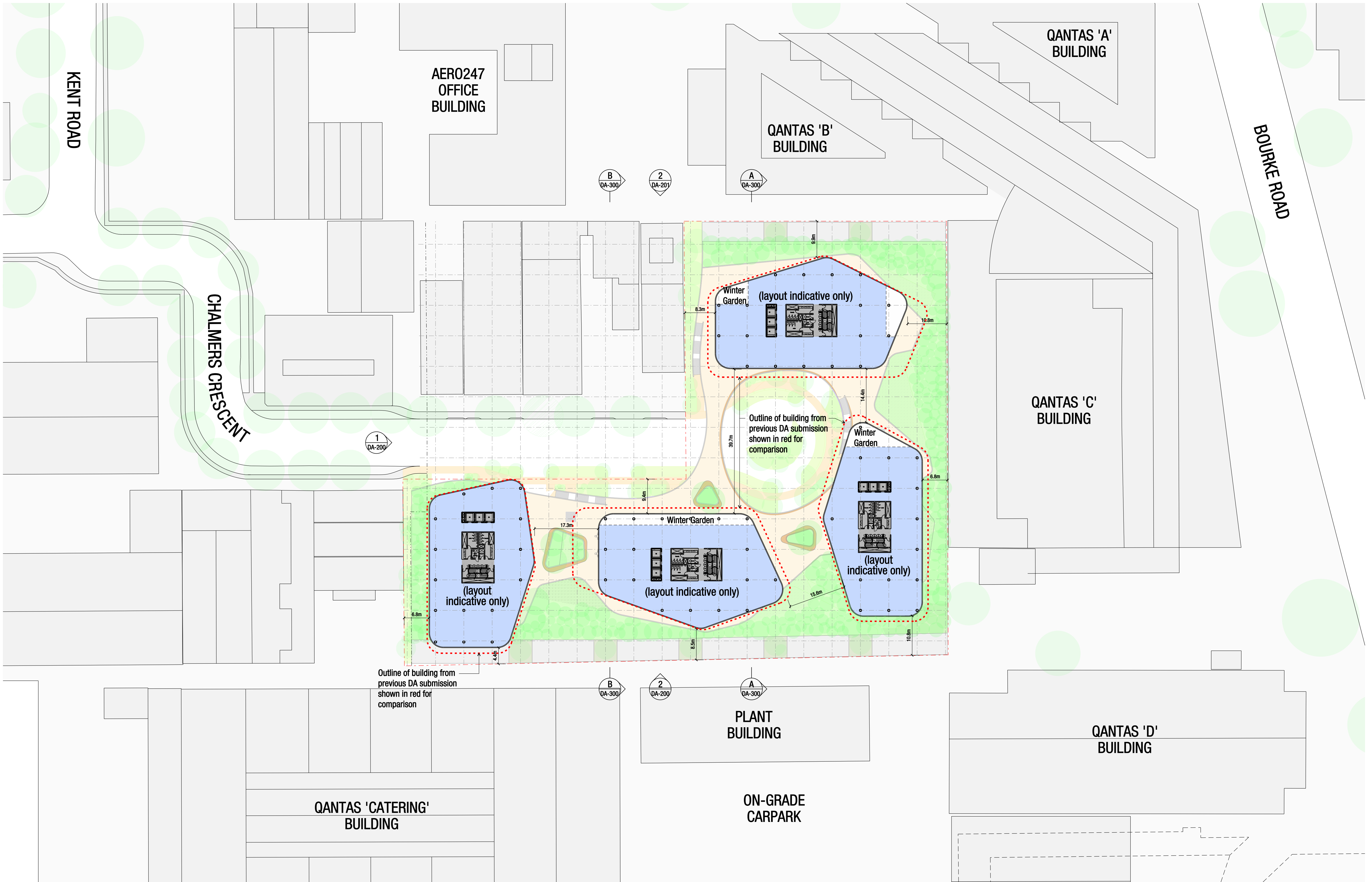
revision L	date 08 SEP 2015	description DA ISSUE UPDATE	by BMD	verification checked by BMD	initial BMD	signature <i>Edna Syme</i>	date 02.04.15 02.09.15	note Do not scale from drawings. All discrepancies to be brought to the attention of the Architect. This drawing is intellectual property and copyright of the author, and must not be retained, copied or used without the express authority of Conrad Gargett Nisdon Anchor Mortlock Woolley Pty. Ltd.	architect CONRAD GARGETT ANCHOR MORTLOCK WOOLLEY RIDDEL	Suite C3.16, Level 3, 22-36 Mountain Street, Ultimo NSW 2007, Australia T + 61 2 9280 2445 F + 61 2 9280 2446 E enquiries@conradgargett.com.au Nominated Architects: Dale Swain, Carl No. 5316 The Designer: Carl No. 0174	NEUBEHN URBAN PLANNING AND DESIGN	BALANCE CORPORATE PROPERTY	project COMMERCIAL MASTERPLAN DA 7-9, 14-18, & 19-21 CHALMERS CRESCENT, MASCOT client F.Mayer (Imports) Pty Ltd on behalf of Mayer Properties Ltd, J Ingster, D&V Saya, H Glaser	drawing LEVEL 1a FLOOR PLAN - CARPARK	scale 1:5000(A1), 1:1000(A3) drawn by SW project no 1204	0 5 10 25m	drawing no DA-102	revision L/A
---------------	---------------------	--------------------------------	-----------	-----------------------------------	----------------	-------------------------------	------------------------------	-------------------------------------------------------------------------------------------------------------------------------------------------------------------------------------------------------------------------------------------------------------------------------------------------------------	-------------------------------------------------------------------------	-----------------------------------------------------------------------------------------------------------------------------------------------------------------------------------------------------------------------------------------------------------------------------------------	------------------------------------------	-----------------------------------	----------------------------------------------------------------------------------------------------------------------------------------------------------------------------------------------------------------	-------------------------------------------------	--------------------------------------------------------------------------------	------------	-----------------------------	------------------------



1 LEVEL 2 FLOOR PLAN - PODIUM - OFFICE/RETAIL
SCALE 1:1000 @ A3

(refer to landscape architect's documentation for landscape information)

revision	date	description	by	verification	initial	signature	date	note	architect	project	drawing	scale	drawn by	project no	drawing no	revision
F	23 MAR 2015	AMENDED MASTER PLAN DA	SW		BMD		02.04.15		CONRAD GARGETT RIDDEL	COMMERCIAL MASTERPLAN DA	LEVEL 2 FLOOR PLAN - PODIUM OFFICE/RETAIL	1:500@A1, 1:1000@A3	SW	1204	DA-103	K
G	02 APR 2015	UPDATE	SW						ANCHER MORTLOCK WOOLLEY	7-9, 14-18, & 19-21 CHALMERS CRESCENT, MASCOT						
H	07 APR 2015	UPDATE	SW						Suite C3.18, Level 3, 22-36 Mountain Street, Ultimo NSW 2007, Australia	F.Mayer (Imports) Pty Ltd on behalf of Mayer Properties Ltd, J Ingster, D&V Saya, H Glaser						
J	14 APR 2015	UPDATE	SW						T + 61 2 9280 2445 F + 61 2 9280 2446							
K	21 JUL 2015	AMENDED DA ISSUE	BMD		DS		02.03.15		E amw@ancherwol.com.au							
				approved by					Nominated Architects, Dale Swan, Cert. No. 3316, Phil Balgott Cert. No. 6174							



1 TYPICAL FLOOR PLAN - OFFICE
SCALE 1:1000 @ A3



1 BRIDGED FLOOR PLAN - OFFICE
SCALE 1:1000 @ A3

revision	date	description	by	verification	initial	signature	date	note	architect	project	drawing	scale	drawn by	project no	drawing no	revision
F	23 MAR 2015	AMENDED MASTER PLAN DA	SW	checked by	BMD		02.04.15	Do not scale from drawings. All discrepancies to be brought to the attention of the Architect. This drawing is intellectual property and copyright of the author, and must not be related, copied or used without the express authority of Conrad Gargett Riddell Anchor Mortlock Woolley Pty. Ltd.	CONRAD GARGETT RIDDELL ANCHOR MORTLOCK WOOLLEY	COMMERCIAL MASTERPLAN DA	ROOF LEVEL PLAN	1:500@A1, 1:1000@A3	SW	1204	DA-107	K
G	02 APR 2015	UPDATE	SW							7-9, 14-18, & 19-21 CHALMERS CRESCENT, MASCOT						
H	07 APR 2015	UPDATE	SW													
J	14 APR 2015	UPDATE	SW													
K	21 JUL 2015	AMENDED DA ISSUE	BMD	approved by	DS		02.03.15			F.Mayer (Imports) Pty Ltd on behalf of Mayer Properties Ltd, J Ingster, D&V Saya, H Glaser						

